

## Afidus APP使用者指南，開始你的第一次縮時攝影

讓我們來看看Afidus延時攝影系統的啟動和操作。

首先，iOS/Android請至APP store/Google store搜尋[Afidus]，並下載APP[Time Lapse]，確定電池及記憶卡都安裝完成後，長壓縮時機電源鈕開機，會聽到開機提示音，同時縮時機上方指示燈呈現綠色。

進入手機的Wi-Fi列表，找到ATL-200S\_XXXXXXXXXX/ATL-201S\_XXXXXXXXXX後點選並輸入密碼(預設密碼12345678)，待看到一個藍色的核取記號時，你已經連接上了，請開啟Afidus APP以操作Afidus縮時攝影機。

### \*小技巧

務必使用一組新的電池（Energizer Max），並安裝隨機附上的mSD卡。

如果APP沒有反應，通過關閉它和打開它來刷新APP。

如果APP與縮時攝影機的連接持續旋轉並且沒有反應，通過關閉Wi-Fi 2-5秒來刷新它。

然後再打開。等到Wi-Fi列表中旁邊出現藍色核取記號，然後前往Afidus APP。

如果攝像機沒有連接，回到設置中，"忘記"WIFI網路。然後輸入我們的預設相機密碼12345678。

## Afidus APP User Guide to start your first time lapse photography

Let's take a look at how to start and operate the Afidus time-lapse system.

First of all, for iOS/Android, please search [Afidus] in APP store/Google store and download the app [Time Lapse]. After making sure the battery and memory card are installed, press and hold the power button to turn on the camera.

Go to the Wi-Fi list of your mobile phone, find ATL-200S\_XXXXXXXXXX/ATL-201S\_XXXXXXXXXX and click on the password (default password 12345678), when you see a blue check mark, you are connected, please open Afidus APP to operate Afidus Time Lapse Camera.

### \*Tip.

Always use a fresh set of batteries (Energizer Max) and install the supplied 16GB mSD card.

If the app does not respond, refresh the app by closing it and opening it.

If the connection between the app and the time-lapse camera continues to spin and is not responding, refresh it by turning off the Wi-Fi for 2-5 seconds. Then turn it back on.

Wait until a blue check mark appears next to the Wi-Fi list and then go to the Afidus APP.

If the camera is not connected, go back to Settings and 'forget' the WIFI network. Then enter our default camera password of 12345678.

## 最推薦使用的電池

不建議使用充電電池進行長期的縮時攝影! 充電電池會自我放電，不適合為長期項目供電。它們也很可能被卡在縮時機內，因為與鹼性電池相比，充電電池的直徑略大而導致較難以取出。

## 我們最好的建議是

優先使用全新且可信賴的鹼性電池作為拍攝縮時攝影使用，碳鋅電池的表現相比之下可能會令你失望。



## Most Recommended Batteries

Rechargeable batteries are not recommended for long term time-lapse photography! Rechargeable batteries are self-discharging and are not suitable for powering long-term projects. They are also likely to get stuck in the time-lapse unit, as they are slightly larger in diameter than alkaline batteries, making them more difficult to remove.

## Our best advise ever

Use new and reliable alkaline batteries for time-lapse photography as a priority, as zinc carbon batteries may disappoint you in comparison.

## 我該挑選哪張記憶卡？

Afidus隨貨都有提供所有使用者一張16Gb SanDisk Ultra，Sandisk有許多規格可以選擇，Afidus建議使用Ultra等級即可，最大可以支援到128GB的記憶卡，且不論記憶卡的大小，請務必在拍攝縮時攝影前使用Afidus縮時機APP為記憶卡進行格式化。

若與其他設備共用記憶卡，也請務必在每一次拍攝之前都使用Afidus APP為記憶卡進行格式化。

SanDisk公司指出："在不同的設備之間交換使用記憶卡是一個壞主意。這可能會導致記憶卡損壞，並大大降低存儲卡的壽命。"

## 建議選擇的記憶卡大小

大多數的縮時攝影不需要用到64Gb及以上的卡，不過在某些獨特的情況之下，您可能會需要較大的記憶卡，例如在有利用到ATL-200S的PIR觸發拍攝功能的情境進行監控和短期野生動物活動感應的情境。此時可能是我們需要64或128Gb卡的拍攝情境

## 你如何取出卡？

1. 打開相機的電池蓋
2. 取出電池
3. 將相機倒置
4. 按住卡直到它發出喀嚓聲並彈出
5. 用你的手指尖輕輕地把它從相機中取出。



## Which memory card should I choose?

Afidus provides all users with a 16Gb SanDisk Ultra in stock. Sandisk has many sizes to choose from and Afidus recommends using the Ultra grade, which supports cards up to 128GB. If you are sharing the card with other devices, be sure to format the card using the Afidus APP before each shot.

According to SanDisk, "It is a bad idea to swap memory cards between devices. This can cause card damage and significantly reduce the life of the card."

## Recommended memory card size

Most time-lapse photography does not require a 64Gb or larger card, but there are some unique situations where you may need a larger card, such as monitoring and short-term wildlife activity sensing in situations that utilise the ATL-200S's PIR trigger recording function. This may be the case where we need a 64 or 128Gb card for recording.

## How do you remove the card?

1. Open the battery cover of the camera
2. Remove the battery
3. Turn the camera upside down
4. Press and hold the card until it clicks and pops out
5. Gently remove it from the camera with the tip of your finger.

## 連接WIFI

這篇文章是為第一次連接到縮時機的用戶準備的。  
開始時務必使用全新的鹼性電池，並安裝隨機附上的提供的mSD卡。

按住電源按鈕打開相機，直到聽到 "嗶 "的一聲。LED燈將亮起綠色，代表縮時機已經開機，此時縮時機正在發出其Wifi訊號。回到您的手機上，搜索縮時機的Wifi網路，名稱為 "ATL200S\_xxxxxxxx"，將你的手機連接到這個網路，並輸入預設密碼 "12345678"。

\*注意: 手機可能會跳出一個訊息指出 "這個WIFI連接沒有網際網路連接"。這是iOS用戶會看到的一個額外的通知，不過不需要擔心，當您看到一個藍色的選取記號(勾勾)時，您的手機已經成功連線了您可以繼續打開Afidus APP。

第一次進入APP，除了會請您重新設定一組新的WIFI密碼之外，APP還會詢問是否允許APP存取手機內的相簿，請確保您點擊 "確定"，否則相機將無法連接到您的手機/平板電腦。

APP將指示您輸入一個新的WIFI密碼。一旦完成新密碼設定，回到您的WIFI網路清單，點擊您的ATL縮時機WIFI右方的 "忘記網路"。之後，使用您的新的個人密碼重新連接到ATL-200S xxxxxxxx網路。

### 請注意

縮時機在開機狀態卻不活動(無啟動拍攝或做任何設定)，會在4分鐘後將自動關機，縮時機發出一聲長的蜂鳴聲以提示您即將關機。

## Connecting to WIFI

This article is for users who are connecting to a shrink for the first time.

Always start with a fresh alkaline battery and install the supplied 16gb mSD card that is included.

Press and hold the power button to turn the camera on until you hear a "beep". the LED will light up green to indicate that the zoom is on, at which point the zoom is sending its Wifi signal. Go back to your mobile phone and search for the Wifi network of the zoom camera, the name is "ATL200S\_xxxxxxxx", connect your mobile phone to this network and enter the default password "12345678".

\*Note: A message may pop up on your phone stating "There is no Internet connection for this WIFI connection". This is an additional notification for iOS users, but don't worry, when you see a blue check mark (tick), you are connected and you can continue to open the Afidus APP.

The first time you enter the APP, apart from asking you to reset a new WIFI password, the APP will also ask if you want to allow the APP to access the photo album on your phone. Make sure you click "OK", otherwise the camera will not be able to connect to your phone/tablet.

The APP will instruct you to enter a new WIFI password. Once the new password has been set, go back to your WIFI network list and click on "Forget Network" to the right of your ATL Zoom WIFI. Afterwards, reconnect to the ATL-200S xxxxxxxx network using your new personal password.

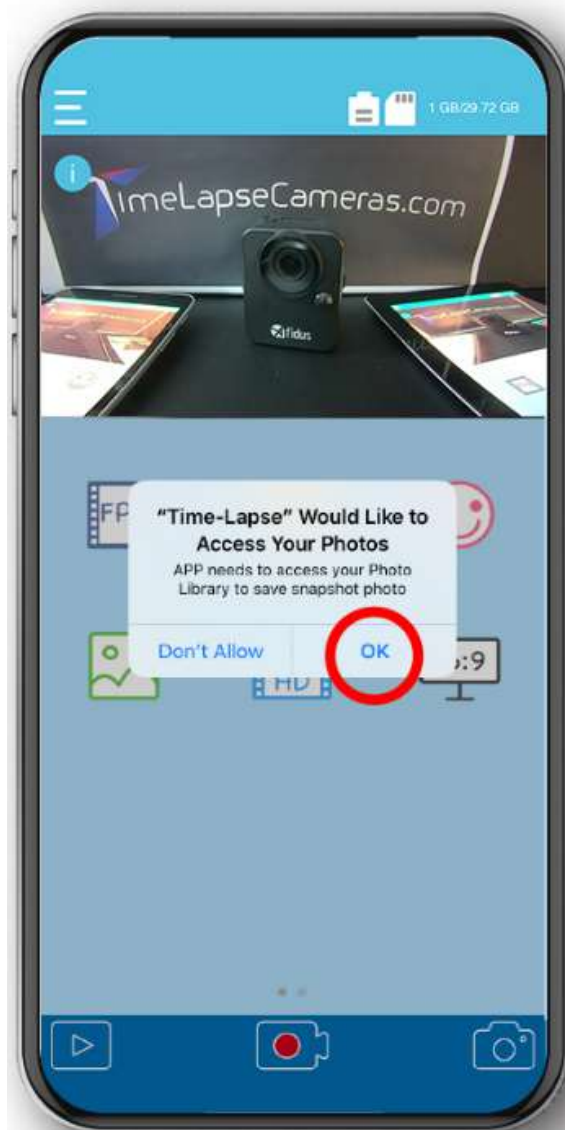
Please note.

The ATL-200S will automatically switch off after 4 minutes when it is switched on but not active (no recording or settings are activated) and a long beep will sound to alert you that it is about to switch off.

Translated with www.DeepL.com/Translator (free version)



\*copy right by timelapsecameras.com



## 韌體更新

Afidus繼續更新韌體，以因應iOS/Android的持續更新並持續提升性能和新增功能。

進入APP後，選擇最右邊的選項[Firmware]，進入韌體下載頁面後便可下載與您擁有的Afidus縮時機型號對應的最新韌體，隨後連上縮時機的Wi-Fi，於縮時機設定頁面點選韌體更新即可。

Afidus建議通過USB線直接連接到電源上作為更新韌體時的電力來源，或安裝全新的鹼性電池後更新韌體。若電池中沒有足夠的電量進行更新，APP會提醒你。

## Firmware update

Afidus continues to update its firmware to keep up with the ongoing iOS/Android updates and to continue to improve performance and add new features.

Once inside the app, select the option right [Firmware] and go to the firmware download page to download the latest firmware corresponding to your Afidus model, then connect to the Wi-Fi of your device and click on firmware update on the settings page of your device.

Afidus recommends connecting directly to the power supply via USB cable as a source of power when updating the firmware, or installing a fresh alkaline battery and updating the firmware. The app will alert you if there is not enough power in the battery for the update.

## 縮時機重置

當發生以下情況時，需要進行相機重置。

- 1.你忘記了你的自訂密碼
- 2.連接到Wi-Fi網路極其困難

縮時機發出很長的'嗶'提示音，並且沒有反應直到將電池移除，以上情況都不常見但卻是實際曾經發生過的案例，以按照以下步驟將縮時機進行重置已恢復正常使用。

**準備好隨機附上的USB線並插上電源，但在緊要關頭，一個隨身電源也具備相同作用。**

- 1.取出電池和SD卡。
- 2.按住電源按鈕不放。
- 3.在按住電源按鈕的同時，插入外部電源（Micro-USB）。

縮時機將開始發出蜂鳴聲(兩短一長)，LED燈將閃爍，等待蜂鳴聲和閃爍聲停止。當最後的蜂鳴聲停止時，縮時機重置就完成了。

在您的手機上，從Wi-Fi列表中選擇ATL-200S網路的[忘記現有的網路]，並輸入Afidus預設密碼（12345678）。

重新連上縮時機Wi-Fi後，打開Afidus APP，你會被要求更改密碼。再次於手機Wi-Fi列表中忘記網路，並輸入您設定的新密碼

## Time-lapse camera system reset

The camera needs to be reset when

1. you have forgotten your custom password
2. it is extremely difficult to connect to a Wi-Fi network

The timer emits a long 'beep' and does not respond until the battery is removed.

**Prepare the supplied USB cable and plug it in, but in a pinch, a portable power supply will do the trick.**

1. Remove the battery and SD card.
2. Press and hold the power button.
3. While holding down the power button, plug in an external power source (Micro-USB). The timer will start beeping (two short and one long) and the LED will flash, wait for the beeping and flashing to stop. When the final beeping stops, the timer reset is complete.

Check your mobile phone, select [Forget existing network] for the ATL-200S network from the Wi-Fi list and enter the Afidus default password (12345678).

After reconnecting to the scaled Wi-Fi, open the Afidus APP and you will be asked to change your password.

Forget the network again in your phone's Wi-Fi list and enter your new password.

## LED指示燈

縮時機頂部的LED指示燈對於確定縮時機的狀態非常重要。這就是我們用來驗證它是否在錄影或是否需要注意的地方。我們建議所有的縮時機每週檢查一次，只需對LED指示燈進行簡單的視覺檢查，以確保它大約每六秒有一次綠色閃爍。

## LED Indicator

The LED indicator on the top of the timer is important to determine the status of the timer. This is what we use to verify if it is recording or if it needs attention.

We recommend that all time lapses are checked once a week with a simple visual check of the LED indicator to ensure that it flashes green approximately every six seconds.

## LED狀態指示器

電源打開：綠燈亮  
 沒有安裝SD卡：持續紅色  
 系統故障：紅燈閃爍/1秒。\*  
 電池電量不足：紅燈閃爍/10秒。  
 韌體更新：閃爍/1秒。  
 硬體重置：閃爍3次  
 縮時攝影拍攝中：綠燈閃爍/6秒。

## LED Status Indicator

Power on: Green light on  
 No SD card installed: continuous red  
 System fault: red light blinks/1 sec. \*\* Low battery  
 Low battery: Red light blinking/10 sec.  
 Firmware update: Blinking / 1 sec.  
 Hardware reset: blinking 3 times  
 Time-lapse photography in progress: Green light blinks/6 sec.



## 紅燈閃爍？現在我應該怎麼做？

如果你碰巧遇上閃爍紅燈1/秒的情況，那麼最好的行動方案是將所有的電池拆下並換成全新的電池，這時把記憶卡移除再重新裝上也無妨。然後繼續打開縮時機電源，通過設置功能表用Wi-fi連接到你的手機等移動設備，開啟APP後開始使用Afidus縮時機。

## Red light flashing? What do I do now?

If you happen to get a flashing red light for 1/second, the best course of action is to remove all the batteries and replace them with fresh ones. Then go ahead and turn on the timer, connect it to your mobile device such as your phone via the settings menu using wi-fi, open the app and start using the Afidus timer.

## 不使用相機時，我應該如何存放我的相機？

建議於未使用時將Afidus縮時機收納於出場時的包裝內，以保護縮時機不受外力撞擊或任何其他環境因素而有部正常的狀況。  
 強烈建議在不使用時將電池從縮時機上取下，以避免電池就放產生漏液等不可預期之狀況。

## How do I store my camera when I am not using it?

It is recommended that you store your Afidus in the same packaging as it came out of when not in use to protect it from external impacts or any other environmental factors that may cause it to malfunction.  
 It is strongly recommended to remove the battery from the timer when not in use to avoid form unpredictable battery leakage.

## 壓縮格式的真正含義？

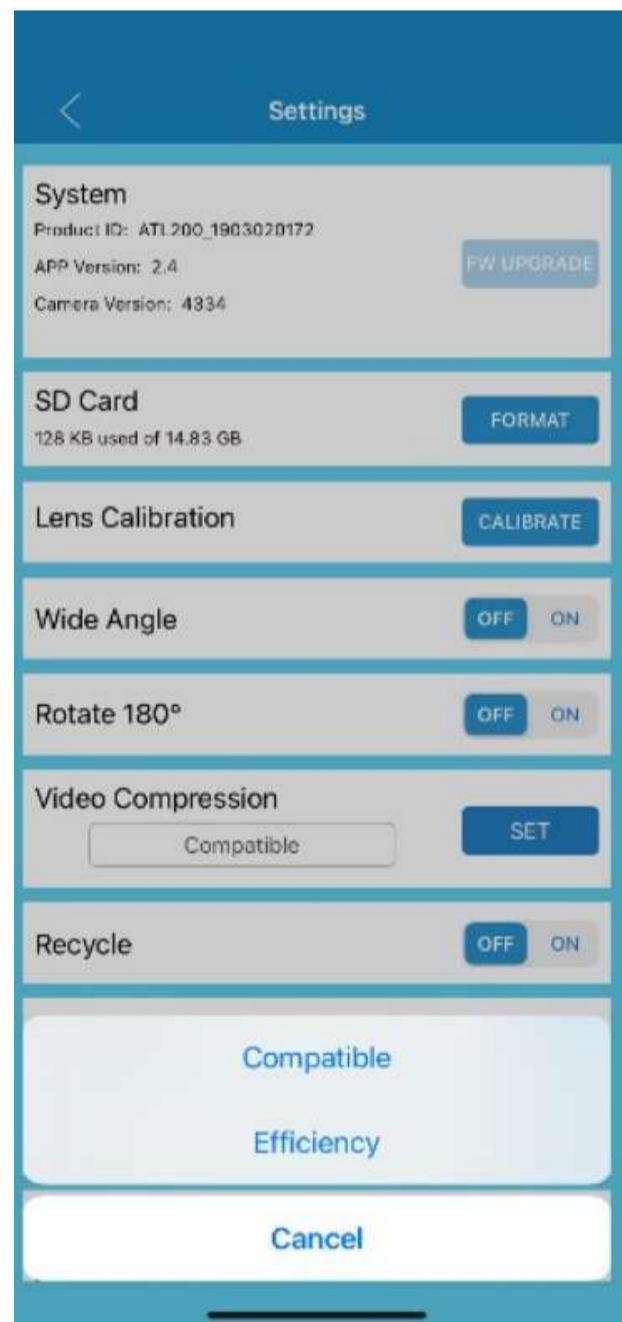
Afidus持續的更新與改進APP，增加它的功能，其中一個變化是影像的壓縮模式，Afidus提供兩個格式的選項。

### 壓縮格式:相容與高效。

一個簡單的答案是，檔大小會隨著設置而變化。與相容模式相比，效率壓縮產生的檔約小30%。

## What does the compression format really mean?

Afidus continues to update and improve the app, adding to its functionality. One of the changes is the compression mode for images, Afidus offers the option of two formats.



## Compression formats: compatible and efficiency.

A simple answer is that the file size varies according to the settings. Compared to compatible mode, efficient compression produces files that are about 30% smaller.



## 隱形檔案救援

拍攝完後記憶卡內無檔案但卻顯示容量被占用

1. 開始->執行->cmd
2. 切換到自己的隨身碟代碼，假如我的隨身碟在（E:）的話，就直接打 E：然後按下 Enter 鍵
3. 然後用複製的或輸入以下指令：attrib -h -s \*.\* /s /d
4. 會看到產生一個新的資料夾
5. 裡面有Afidus縮時檔案編號的.CHK檔案
6. 將副檔名從.CHK手動改成.MP4
7. 檔案就變成可撥放的縮時檔案

## Ghost file rescue

Memory card shows no file but some space been occupied.

Click "cmd" in windows

switch to your own USB flash drive code, if my USB flash drive is in (E:), type E: and press Enter

Then copy or type the following command: attrib -h -s \*.\* /s /d

You will see a new folder has been created in USB drive

.CHK file with the Afidus shrinkage file number

manually change the subfile name from .CHK to .MP4

the file will become a playable time-lapse MP4 file

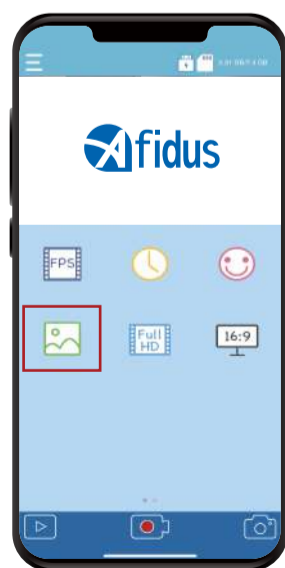
## Afidus縮時攝影機夜間對焦小撇步

Afidus縮時攝影機為不同場景提供了不同的模式供使用者選擇，其中Star模式讓縮時機以更長的曝光時間獲得更好的夜間畫面品質，但這也降低了縮時機在APP中預覽畫面的更新率，而Afidus的智慧對焦能力也因此受影響。

當需要在較低亮度的環境對焦時，請先使用Daylight模式，在Daylight模式之下，縮時機的快門較快連帶畫面更新率也較高，因此獲得較好的智慧對焦能力，於對焦完成之後再切回Auto或是Star模式若您需要的話。

Afidus timelapse camera provides different scene for different environment, the Star scene allows camera captures in longer shutter for better image in dark environment, but it reduces the live-view frame rate, it affects camera focus ability sometimes.

Please use "Daylight " scene while focusing, the Daylight mode allows shorter shutter speed and keep high frame rate, camera focus ability is better under Daylight mode in dark environment and switching back to "Auto" OR "Star" scene after focusing if it necessary.



ATL-200S&amp;201S



ATL-800